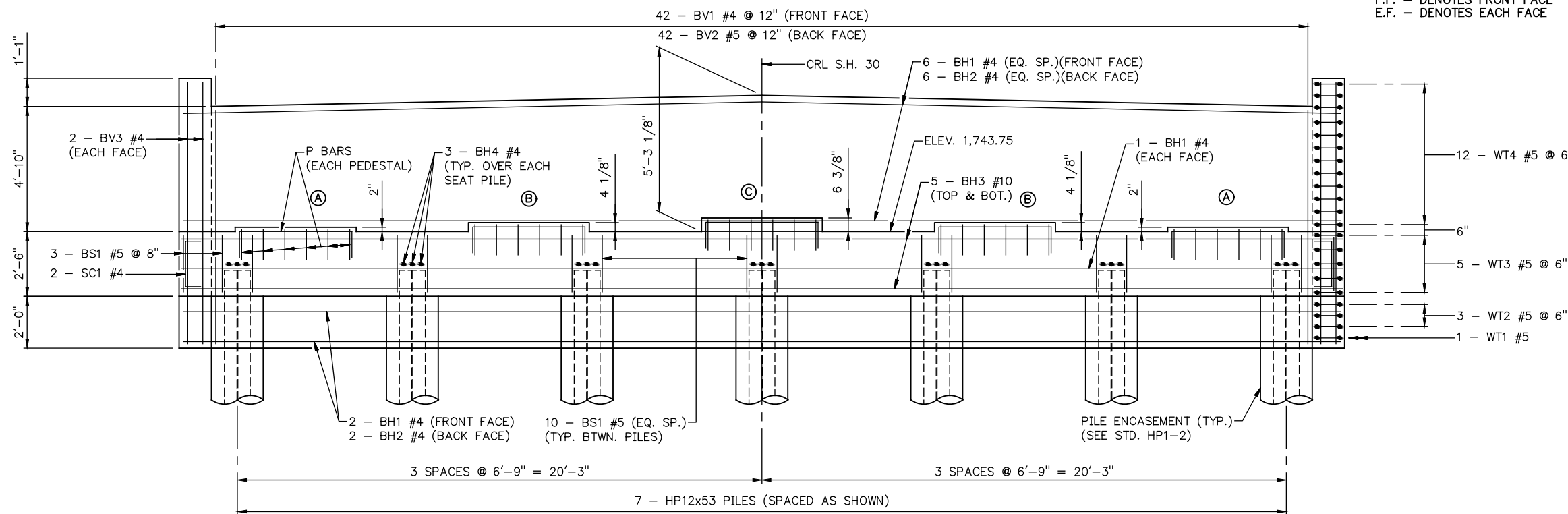


PLAN



ELEVATION
(LOOKING BACK-STATION)

NOTES: ALL REINFORCING STEEL BETWEEN BRIDGE SEAT AND/OR BACKWALL AND WINGS SHALL BE TIED IN PLACE PRIOR TO POURING BRIDGE SEAT AND BACKWALL (BV AND WT BARS).

ALL EDGES OF THE ABUTMENT AND WINGS SHALL HAVE A 3/4" CHAMFER, UNLESS OTHERWISE SHOWN.

FOR WING DETAILS, BAR BENDS, BAR LISTS AND QUANTITIES, SEE SHEET NO. 41.

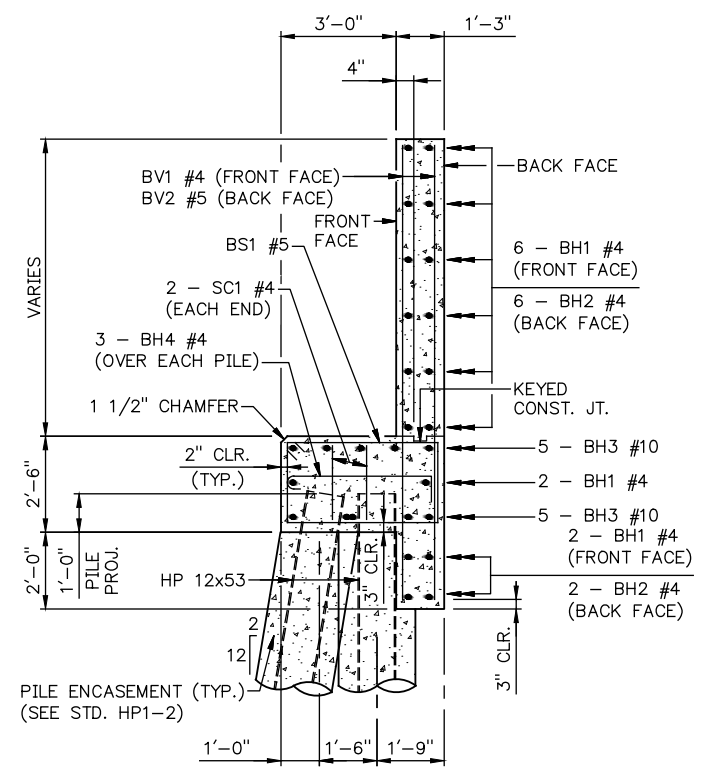
FOR SUBSTRUCTURE STAKING DIAGRAM, SEE SHEET NO. 39.

NOTES: TREAT FRONT FACE OF BACKWALL, TOP OF ABUTMENT SEAT, ALL SURFACES OF PEDESTALS WITH A PENETRATING WATER REPELLENT SURFACE TREATMENT.

TREAT FRONT FACE OF ABUTMENT SEAT ABOVE THE FINISHED GROUND LINE WITH PENETRATING WATER REPELLENT SURFACE TREATMENT.

SCHEDULE OF PEDESTAL ELEVATIONS	
PEDESTAL	ELEVATIONS
A	1743.92
B	1744.10
C	1744.28

NOTES:
B.F. - DENOTES BACK FACE
F.F. - DENOTES FRONT FACE
E.F. - DENOTES EACH FACE



TYPICAL SECTION THRU SEAT

ABUTMENT 1 DETAILS
(SHEET 1 OF 2)
BRIDGE "A" C.R.L. STA. 586+80.46

State Job No. 28768(04) Sheet No. 40